



QUIET DUPLEX APARTMENT · SAINT-MARTIN-DE-BELLEVILLE

QUIET DUPLEX APARTMENT



Réf : 2868-4

This duplex in very good condition is nestled in one of the most sought after areas of the village of Saint-Martin-de-Belleville, it benefits from a quiet location as well as the resort centre.

Indeed, the snow front is only 5 minutes walk from the chalet.

Quality materials, optimised spaces and very well thought out in a rental spirit, this design and uncluttered atmosphere will stand out from the usual chalet spirit in the mountains.

Designed on 2 levels, this property has 2 double bedrooms as well as a dormitory room, a kitchen open onto a living room with fireplace giving access to a beautiful view.

A large shared garage completes this property with its two indoor parking spaces,



1 500 000€

Fees charged to seller

Non-contractual document.

The information illustrating the advertisements relating to the properties and their surroundings (descriptions, photographs, surface areas, points of interest, etc.) is provided for information purposes only, without any guarantee of completeness or accuracy.



LAYOUT

GROUND FLOOR

- △△ 2 parking spaces in the common garage
- △△ Ski locker

LEVEL 1

- △△ An entrance
- △△ Cathedral living room with fireplace
- △△ Kitchen
- △△ 2 bedrooms with king size beds (one with sauna)
- △△ 1 dormitory room
- △△ 1 bathroom
- △△ 2 shower rooms



154.51m²



3



1



2



KEY POINTS

- ⚡ Near the slopes
- ⚡ In the centre of the village
- ⚡ Shuttle

AMENITIES



Balcony



Fireplace



Terrace



Sauna



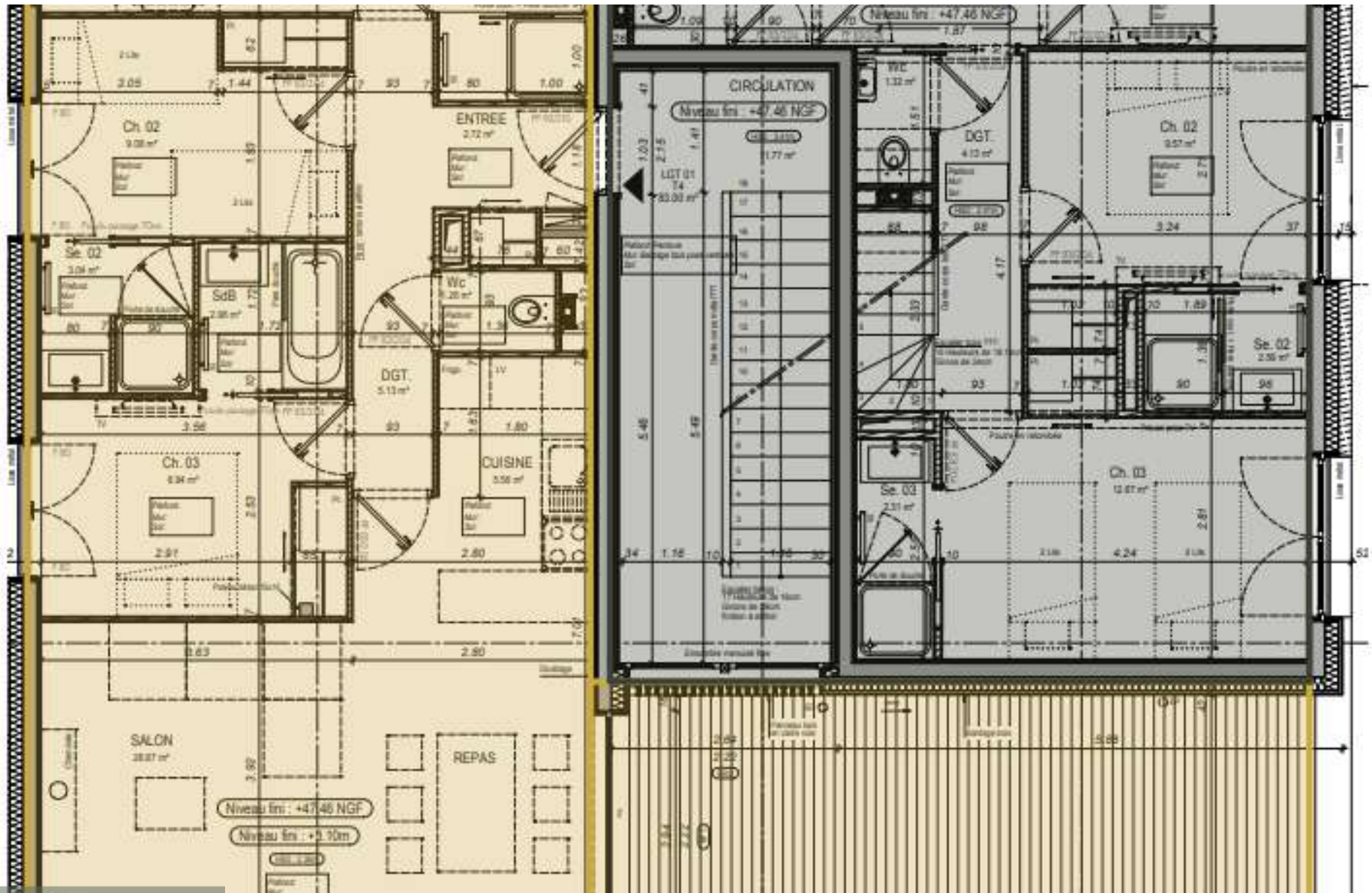
Ski room



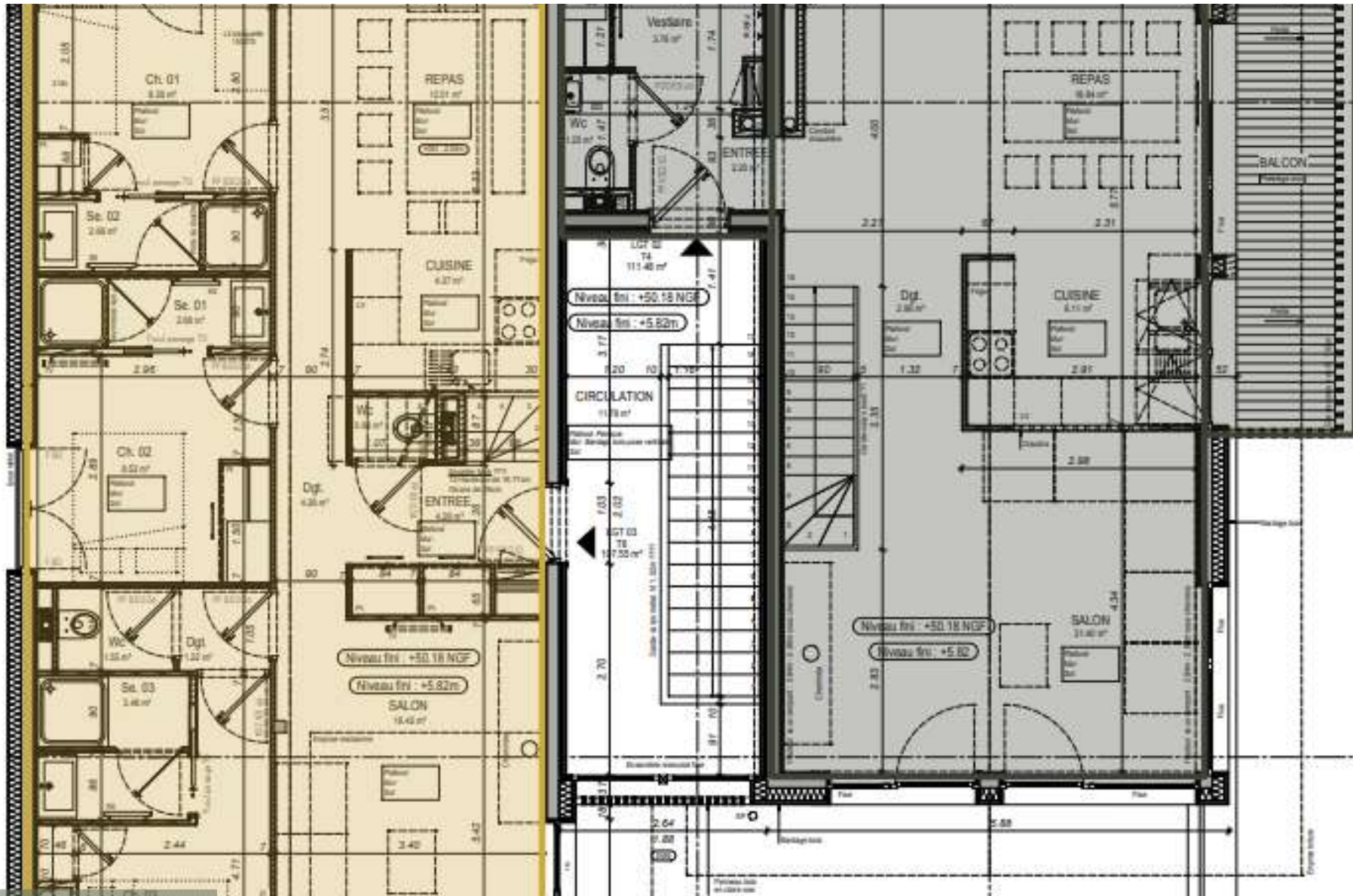
Ski cellar



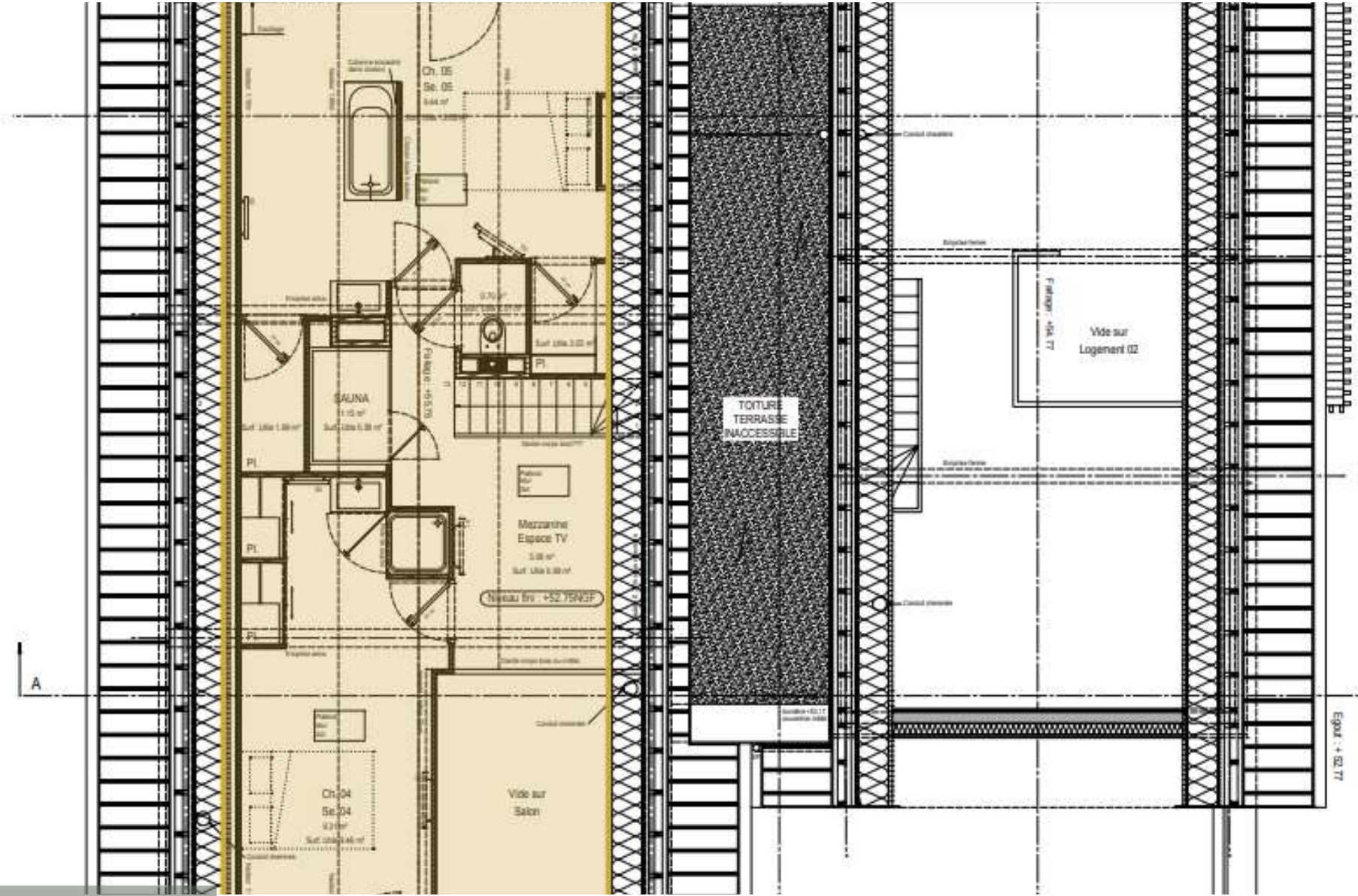
LOCATION



PLAN



PLAN



PLAN





















